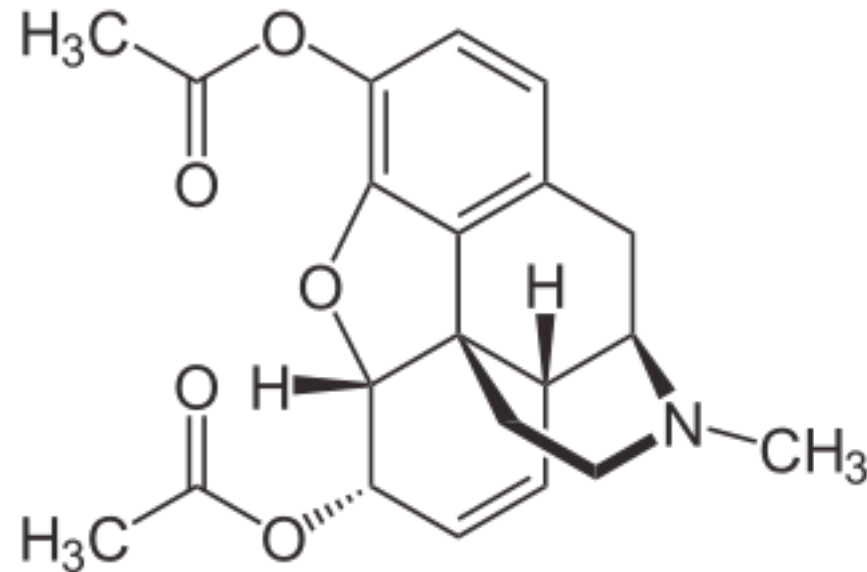
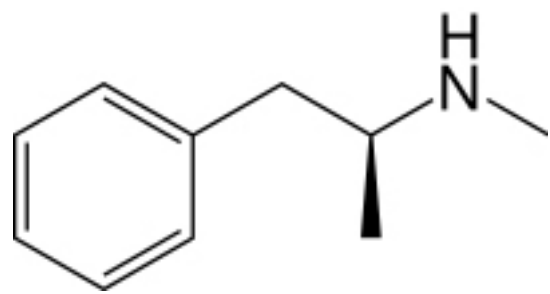


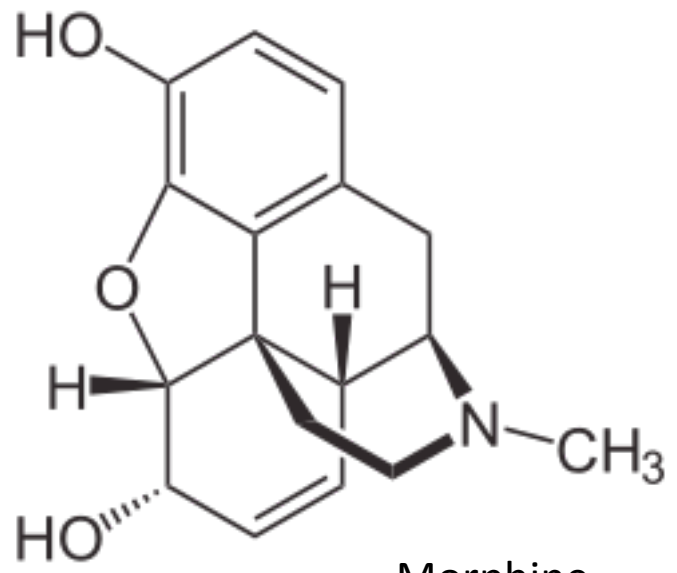
Cocaine



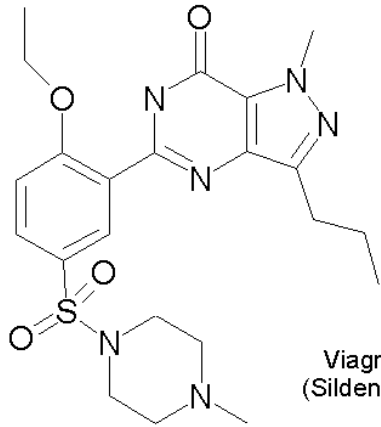
Heroine



Methamphetamine

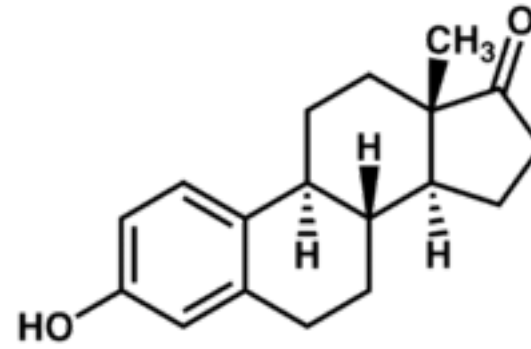


Morphine

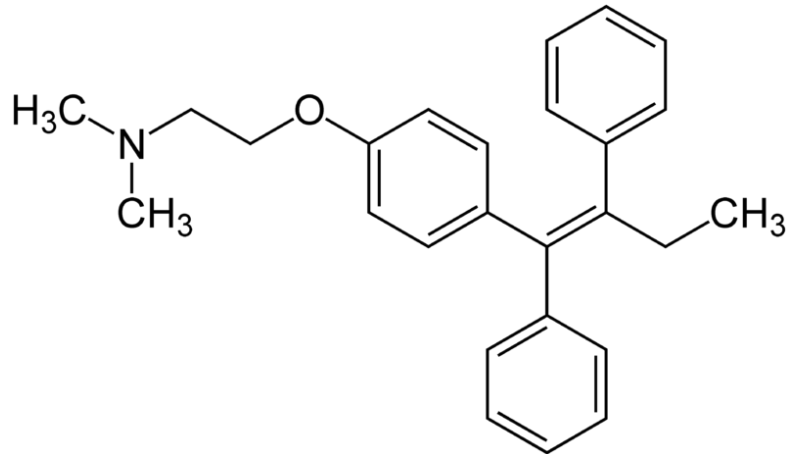


Viagra
(Sildenafil)

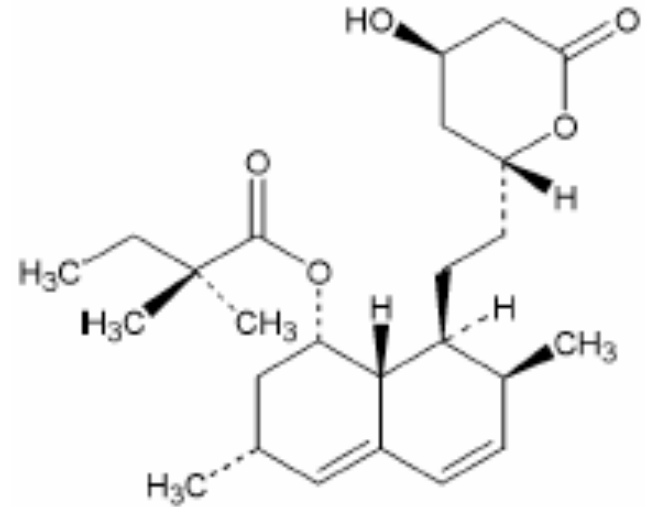
Molecular Weight = 474.59
Exact Mass = 474
Molecular Formula = C₂₂H₃₀N₆O₄S
Molecular Composition = C 55.68% H 6.37% N 17.71% O 13.48% S 6.76%



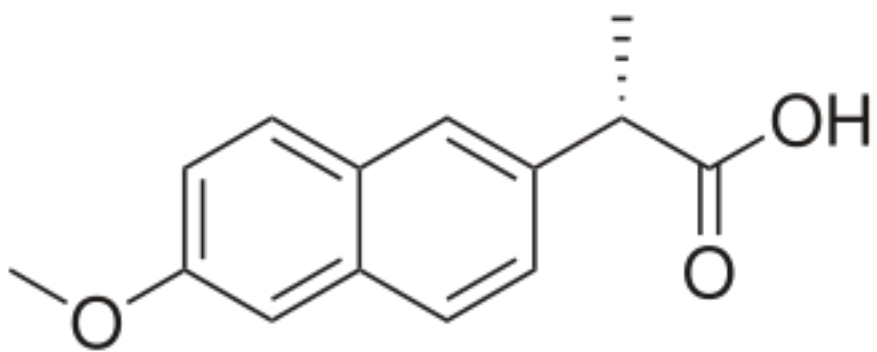
Estrogen derivative



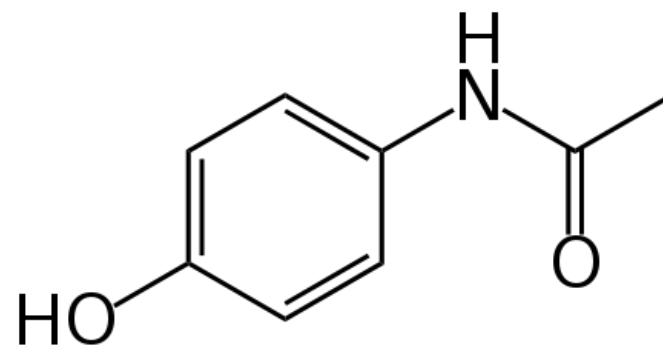
Tamoxifen



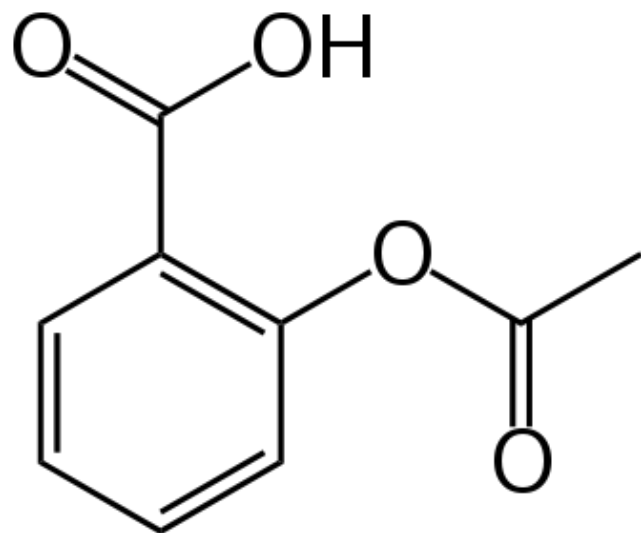
Vytorin



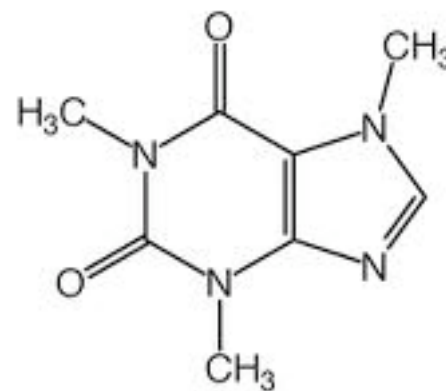
Alleve



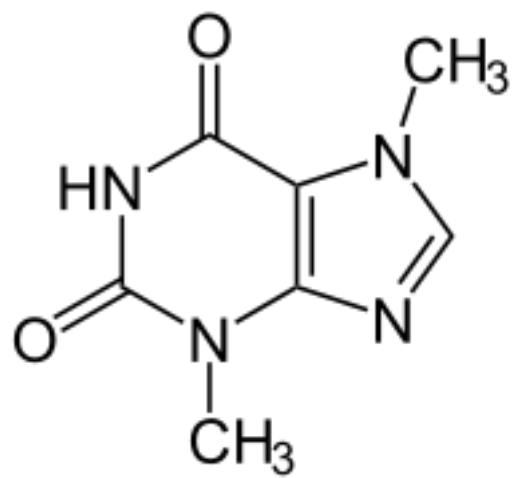
Tylenol



Aspirin



Caffiene



Theobromine